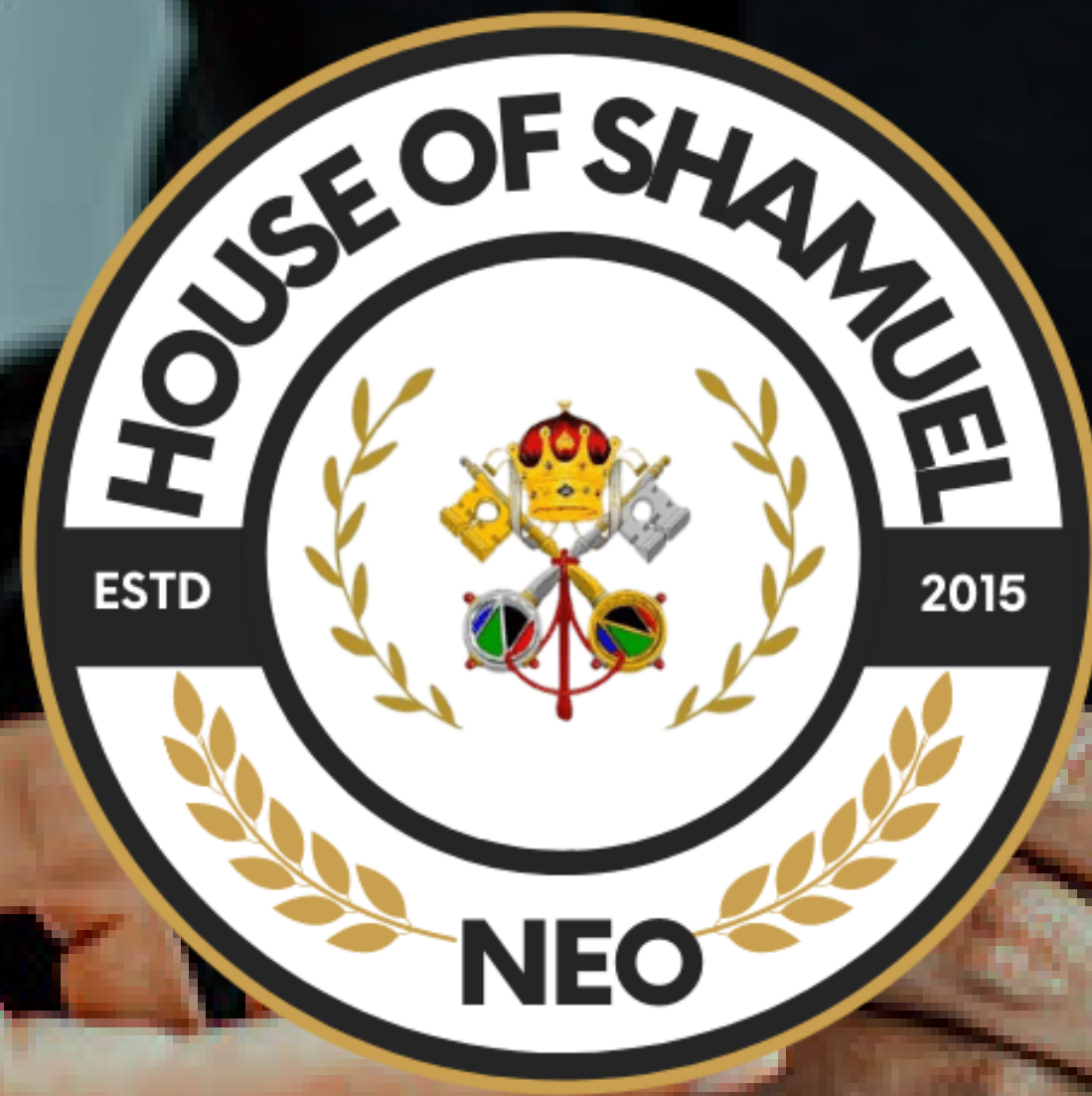


2015

Perpetual



# SHAMUEL'S HOUSE

## PITCH DECK PRESENTATION

This whitepaper is used as a communication tool that may be used for a variety of purposes, including demonstrations, lectures, speeches, reports, and more. It is generally performed in front of an audience

# Agenda



- 1 Global faith Base
- 2 Global Fund for Fund of Funds
- 3 Global Advisory
- 4 Global Credit Banking
- 5 Global Sovereignty Governance

# Global Trade Desk



community  
exchange  
system



“

**“When money realizes that it is in good hands, it wants to stay and multiply in those hands.”**

— Idowu Koyenikan

# Timeline



Family Conception

Family Structure

Family Portfolio

Family Finance

2015 - House of Shamuel

2017 - Global Trust

2019 - Shamuel Family Office

2021 - Seed Fund Round



# OUR SERVICES



## Global Planning

Estate, Financial, Investments, and Business

Need a Global Certified Financial Planner?



## Global Risk Management

Counterparty, investment, insurance, etc

Need a Global Risk Manager?



## Execute Smart Contract Acquisitions

All industries included government procurements

Need a Global Procurement Officer ofr your next deal?



## Global & Local Budgeting

Business, Government, and Organizations

Presentation is a communication tool used for various purposes.

# Global Services

## Global Funding

Looking for a Global Partner?

House of Shamuel is a global finance partner

## Global Consultation

Replace your manager for consultation.

House of Shamuel is a global smart contract advisory

## Global M & A

Need a smart contract merger?

House of Shamuel can assist you with smart contract mergers

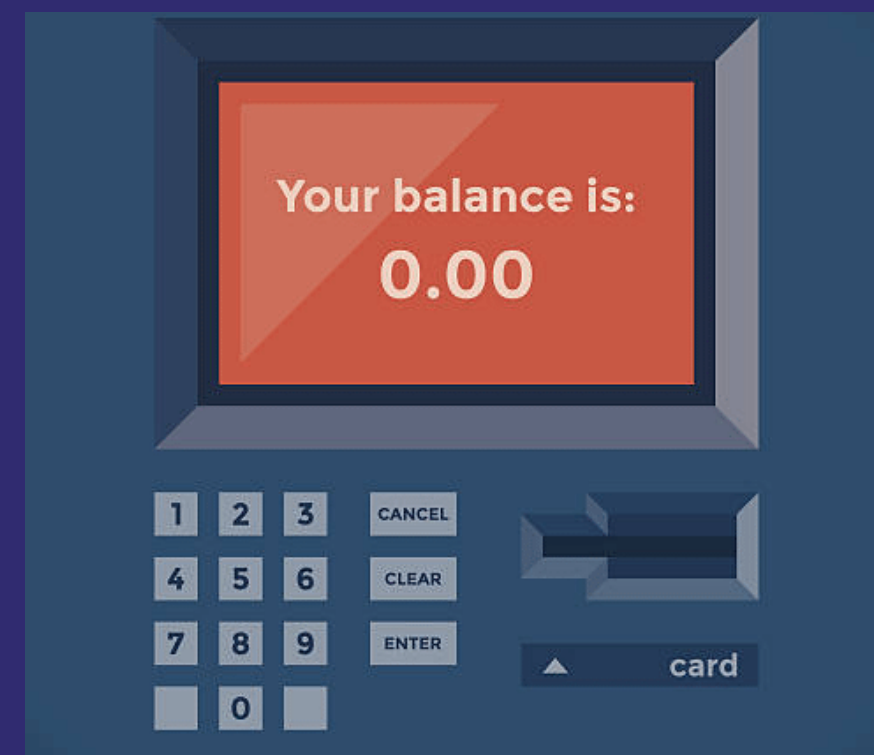
## Global Banking

House of Shamuel for your private credit banking

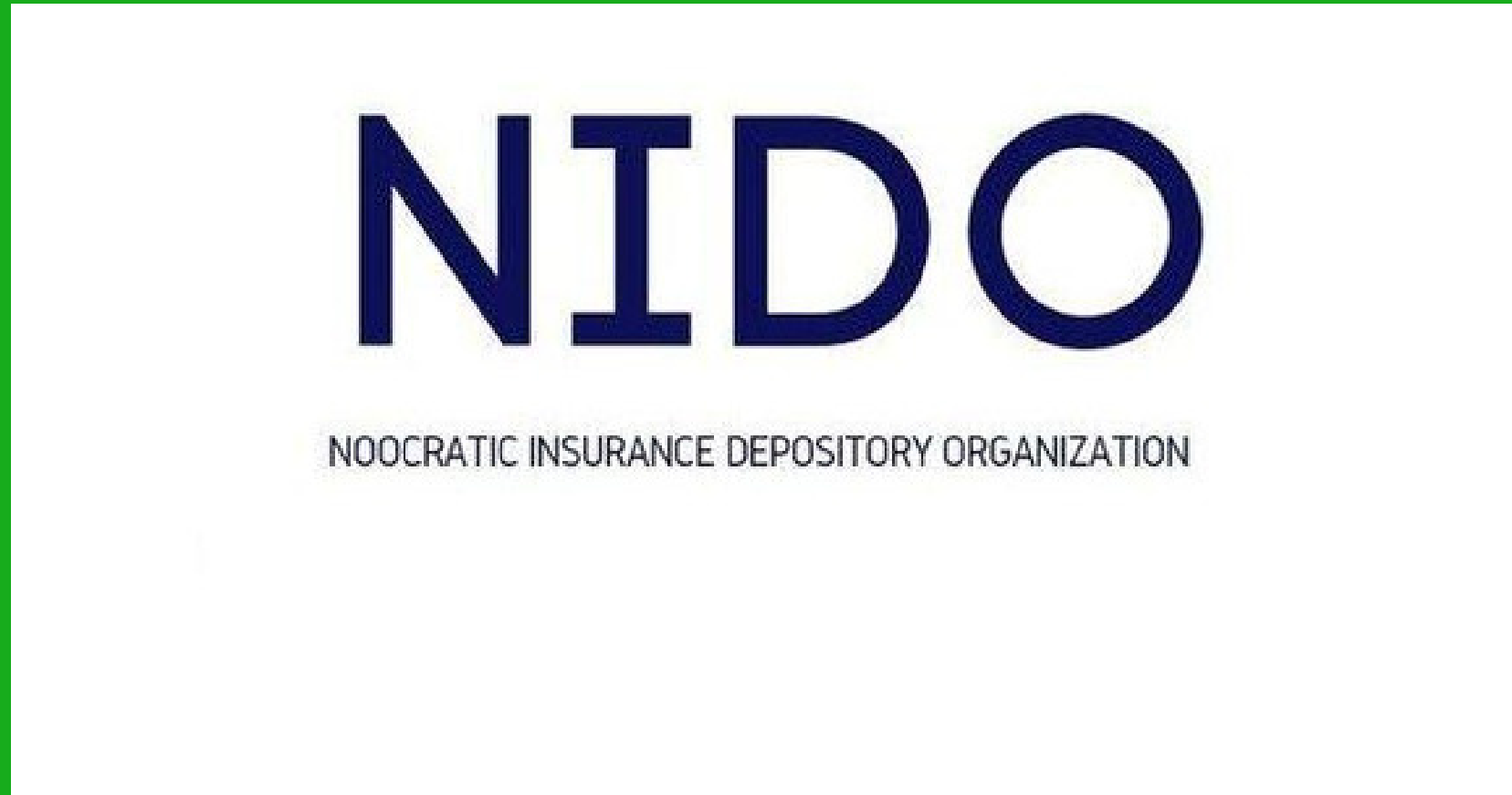
House of Shamuel is a provider of global creditbanking house



# Smart Contract Investments







Portfolio

**Bitcoin**

**Etherium / Shitcoin**

**Safe Blockchain**  
**Truly Decentralized**  
**Smart Contracts**  
**Multifaceted**

Bitcoin is safer  
Bitcoin is truly decentralized  
Bitcoin has better smart  
contracting  
Bitcoin has deep volume to fill

**Unsecure Blockchain**  
**Centralization**  
**Digital Contracts**  
**Mass fraud**

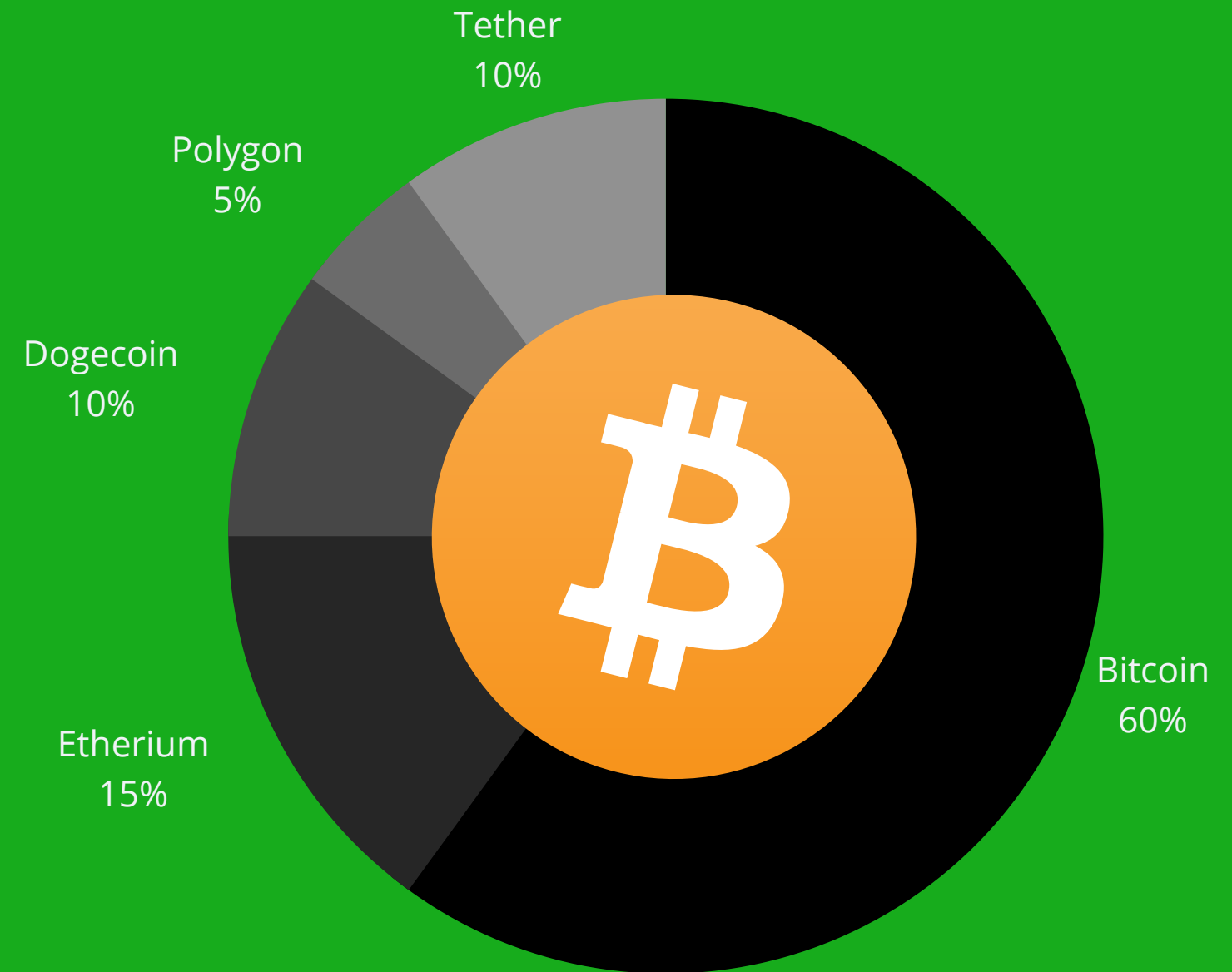
# Smart Contract Chart

This figure represent the Bitcoin  
Community and the potential growth  
factor of 10x plus.



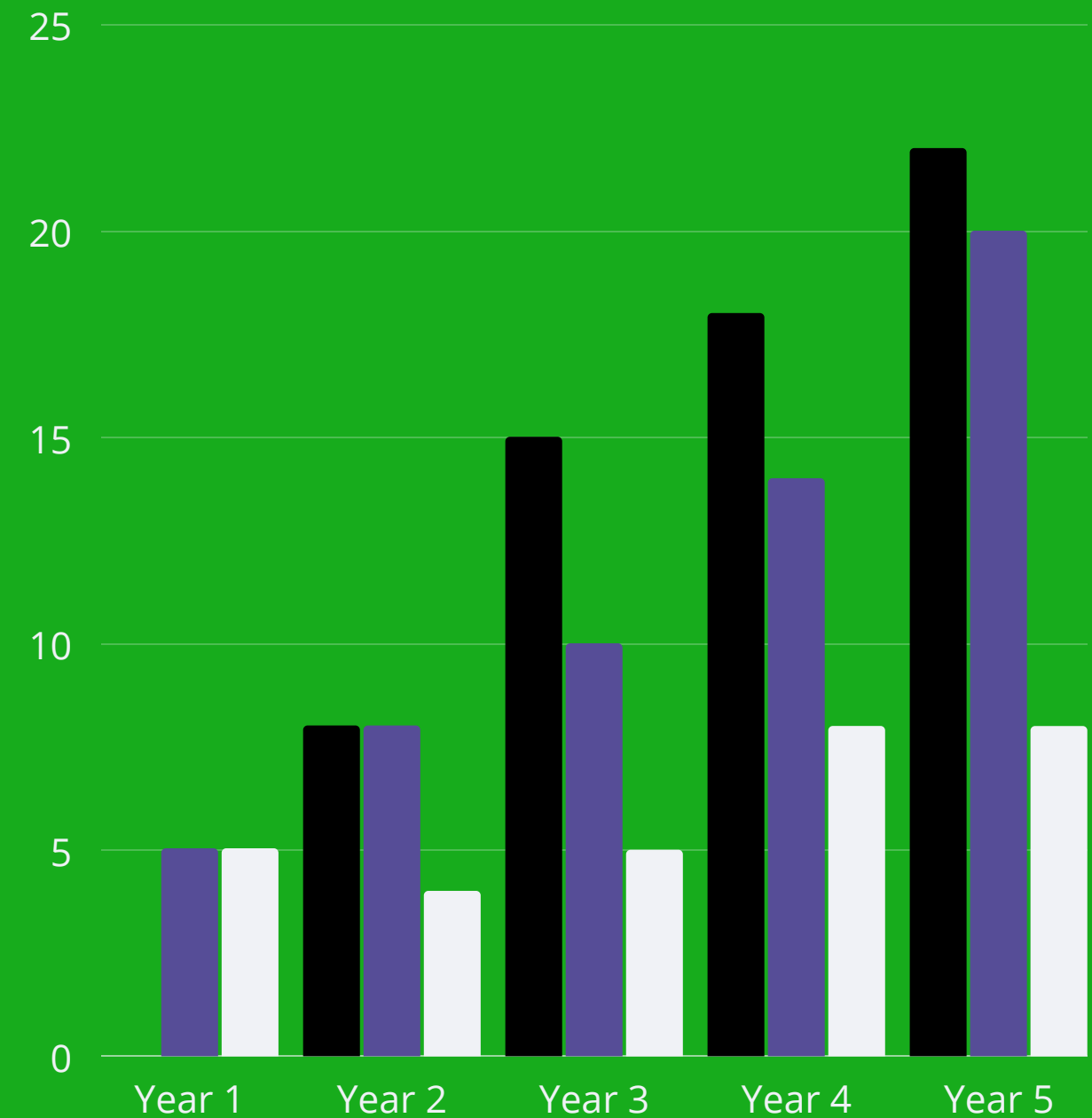
# Blockchain Domanance

- Bitcoin is in highest market domanance.
- Bitcoin is leading in safe investments.
- Bitcoin has diverse demographics.
- Bitcoin has security incentivized features



# Distributed Ledger Value Growth

This bar chart represent the Community Exchange System and Bitcoin Blockchain Market Value Growth.





# ABOUT COMPANY



## Family Legacy

Shamuel the Seer (Ra the Egyptian Deity) is a reincarnated figure who, in the narratives of the Hebrew Bible, plays a key role in the transition from the period of the biblical judges to the institution of a kingdom under Saul, and again in the transition from Saul to David. He is venerated as a prophet and chief judge of Israel by Jews, Christians, and Muslims. In addition to his role in the Hebrew Scriptures, Samuel is mentioned in the New Testament, in rabbinical literature, and in the second chapter of the Qur'an although here not by name. He is also treated in the fifth through seventh books of Josephus's Antiquities of the Jews, written in the first century CE (AD). He is first called the Seer in 1 Samuel 9:9.

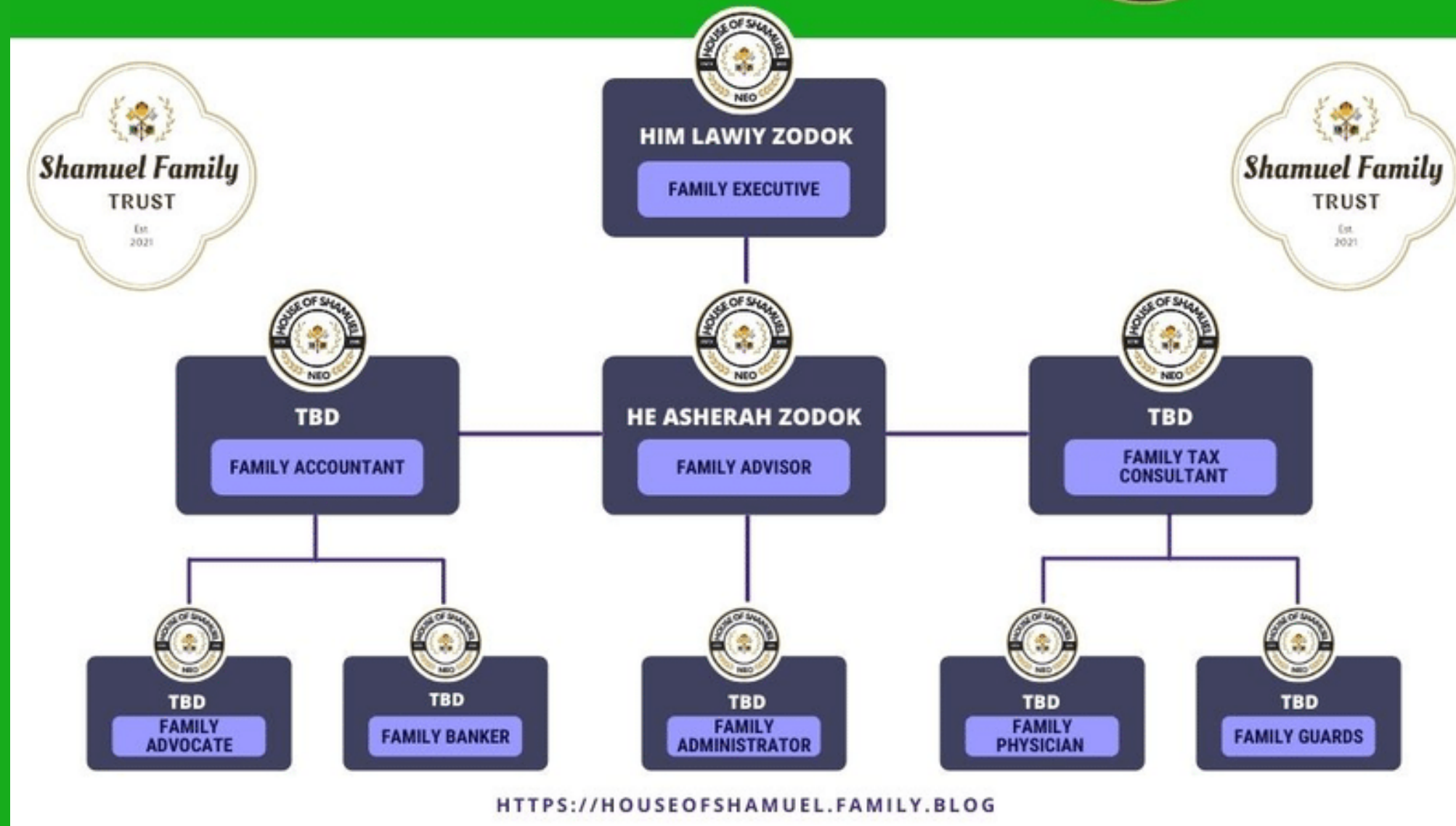


## Family History

The book of Genesis and pre-biblical scriptures record the descendants of Adam and Eve. The enumerated genealogy in chapters 4, 5, and 11, reports the lineal male descent to Abraham, including the age at which each patriarch fathered his named son and the number of years he lived thereafter. The genealogy for Cain is given in chapter 4, and the genealogy for Seth is in chapter 5. The genealogy in chapter 10, recording the male descendants of Noah, is known as the Table of Nations. We are an ancient Biblical Family Linage of ministers and advisors.

We are a team of stewards for the Holy Family and their talented religious concierge professionals with a sacred calling of skills and experience. We love what we do, and we do it with passion. We look forward to working with you.

## House of Shamuel Holy Family Officers



# The Holy Family

This is the organizational chart for the House of Shamuel, and the Royal Family Officers and Board of Advisors.

# THE HOUSE TEAM



## HM ASHERAH ZODOK

HM Asherah Zodok of the Shamuel Family is the Global Family Credit Banker



## HIM L. ZODOK

HIM L. Zodok of the Shamuel Family is the executive of the Global Family Credit Banking House



## FAMILY OFFICERS

The Shamuel Family officers are appointed by the Global Holy Family



Keep Track of Your  
Finances Accurately

**PROVIDE  
SERVICE TO  
US**

<https://houseofshamuel.family.blog>

Assist with  
Investment Planning

# CONTROLLING CASH FLOW FROM BUDGET LEAKS



**Monitoring the Flow  
of Funds**



**Maintaining Control Over  
Everything that has been Prepared**





# CONTACT US

Phone Number  
6789486096

Shamuel Family's Trust  
House of Samuel

**Thank you!**

<https://houseofshamuel.family.blog>